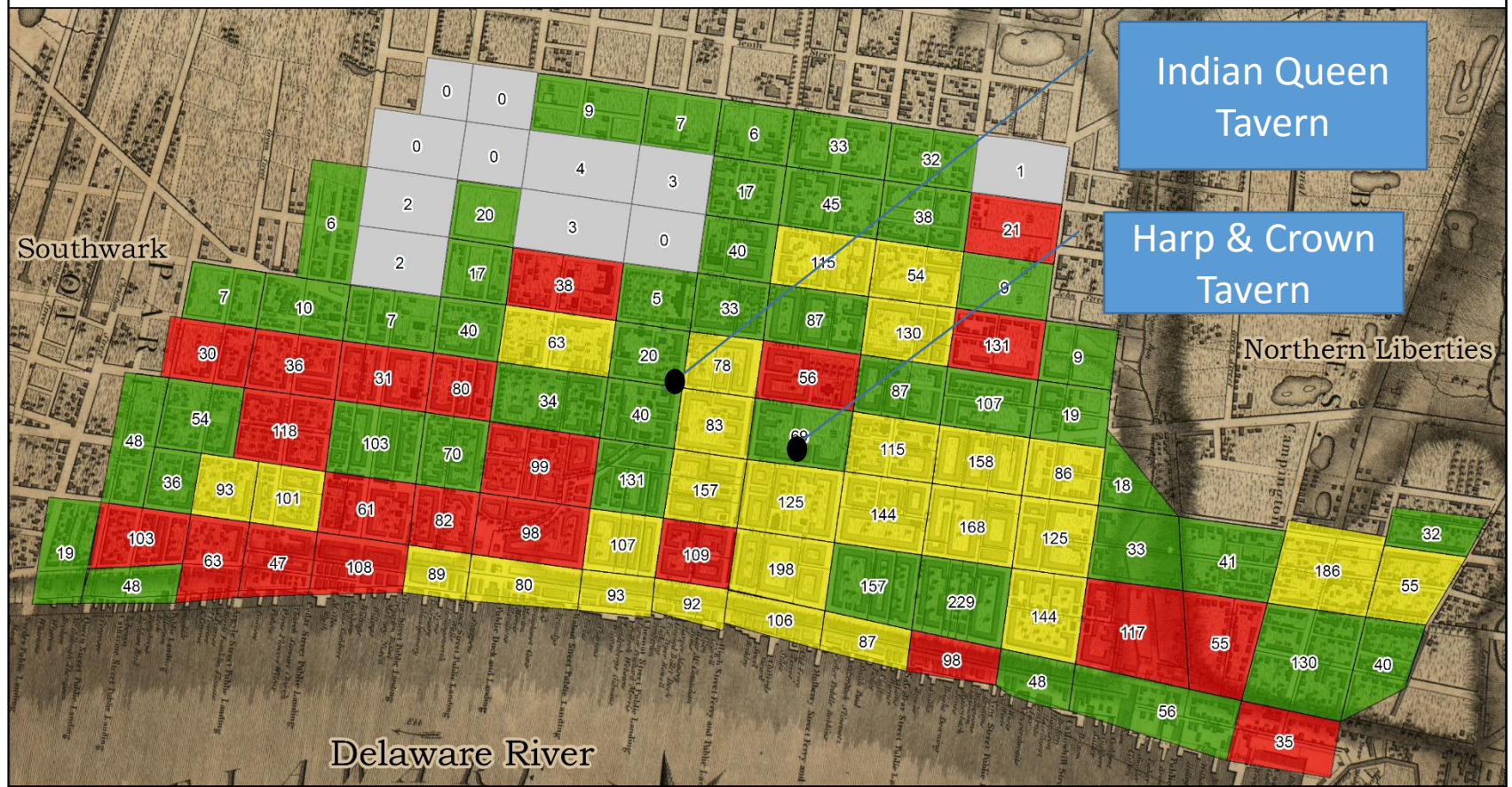


Figure 12

Ethnicity Philadelphia 1789-1791

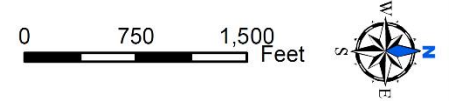


Proportions of Irish Householders (7% of all householders)

- Underrepresented
- Equally Represented
- Overrepresented
- Insufficient Data

#'s = Householders per block

Meeting Places of the Hibernian Society in 1790s



Project Directors: Prof. Billy Smith, Dept. of History, Montana State University, & Dr. Paul Sivitz, Dept. of History, Idaho State University
 GIS Map & analytical team: Alex Schwab, Tara Chelsey-Preston, Alice Hecht & Prof. Stuart Challenger, Dept. of Earth Sciences, Montana State University
 Data compiled from the 1791 Philadelphia City Directory, 1790 Census & 1789 PA Tax List. Background map: John Hills, 1796, Library of Congress

Sources and Methodology:
 See <http://www.mappinghistoricalphiladelphia.org/appendix-to-flaneur.html>