



ROWING ON THE LAKE AND SWIMMING IN THE MODERN POOL ARE FAVORITE SUMMER SPORTS
AT RIVERVIEW BEACH PARK, PENNSVILLE, N.J., ON THE DELAWARE



This photograph is made only for
research purposes or to share non-commercially.
For all other purposes,
contact Rights and Reproductions at
rrr@hsp.org
215-732-6200 x333
web: <http://digitallibrary.hsp.org>



NO FLASH

Material may be protected by copyright law
(Title 17 U.S. Code).
Commercial usage rights are not granted for
this image.

**PLACE THIS CARD
IN ALL PHOTOGRAPHS**

2

Beach

*W. J. Pennsville
Riverview Beach*

SEP 24 1945

BOATING ON THE LAKE AND SWIMMING IN THE MODERN POOL ARE FAVORITE SUMMER SPORTS
AT RIVERVIEW BEACH PARK, PENNSVILLE, N.J., ON THE DELAWARE



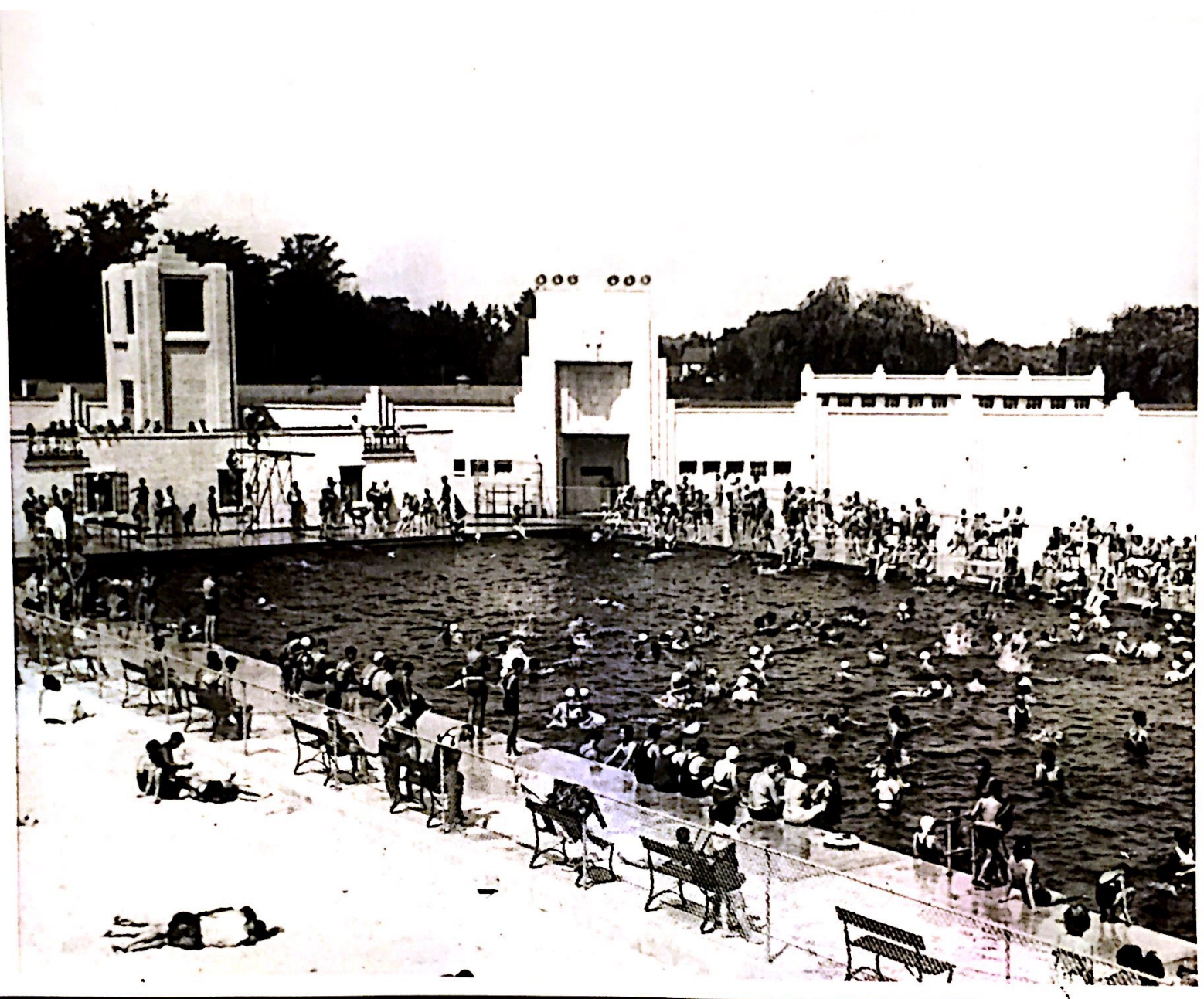
This photograph is made only for research purposes or to share non-commercially. For all other purposes, contact Rights and Reproductions at rnrr@hsp.org 215-732-6200 x333 web: <http://digitallibrary.hsp.org>



NO FLASH

Material may be protected by copyright law (Title 17 U.S. Code). Commercial usage rights are not granted for this image.

**PLACE THIS CARD
IN ALL PHOTOGRAPHS**



A LARGE MODERN SWIMMING POOL IS A STELLAR ATTRACTION AT RIVERVIEW BEACH PARK,
PENNSVILLE, N.J., ON THE DELAWARE.



This photograph is made only for
research purposes or to share non-commercially.
For all other purposes,
contact Rights and Reproductions at
rnr@hsp.org
215-732-6200 x333



Material may be protected by copyright law
(Title 17 U.S. Code).
Commercial usage rights are not granted for
this image.

PLACE THIS CARD

5 Record

M. S. Tommelle
Riverview Beach

SEP 24 1945

A LARGE MODERN SWIMMING POOL IS A STELLAR ATTRACTION AT RIVERVIEW BEACH PARK,
PENNSVILLE, N.J., ON THE DELAWARE.



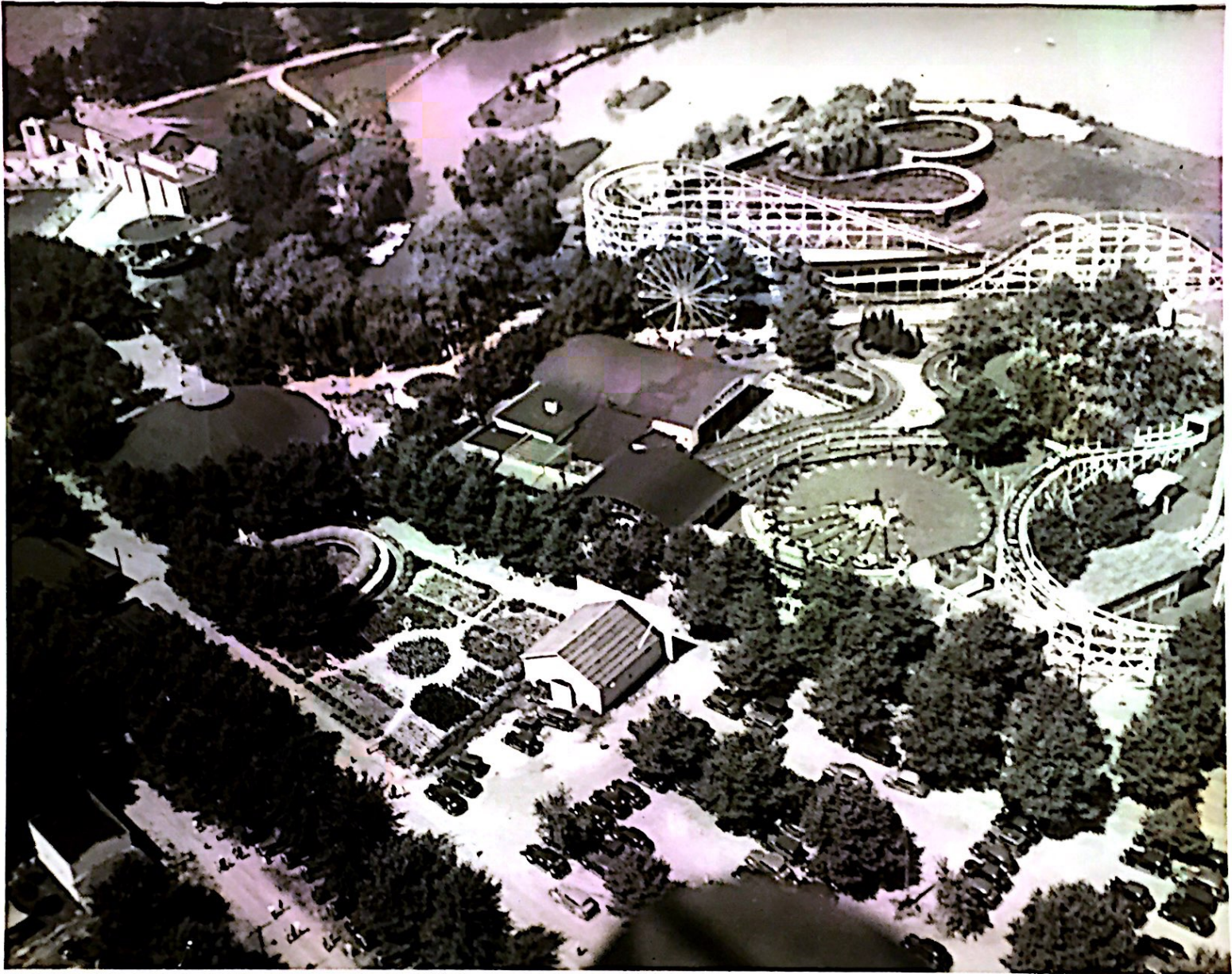
This photograph is made only for research purposes or to share non-commercially. For all other purposes, contact Rights and Reproductions at rn timer@hsp.org 215-732-6200 x333 web: <http://digitallibrary.hsp.org>



NO FLASH

Material may be protected by copyright law (Title 17 U.S. Code). Commercial usage rights are not granted for this image.

PLACE THIS CARD IN ALL PHOTOGRAPHS



AMUSEMENT RIDES, A MODERN SWIMMING POOL, A LAKE AND AN ATHLETIC FIELD MAKE RIVER-VIEW BEACH PARK AN IDEAL RESORT FOR FAMILY OR GROUP EXCURSIONS.



This photograph is made only for research purposes or to share non-commercially. For all other purposes, contact Rights and Reproductions at mr@hsp.org 215-732-6200 x333 web: <http://digitallibrary.hsp.org>



NO FLASH

Material may be protected by copyright law (Title 17 U.S. Code). Commercial usage rights are not granted for this image.

**PLACE THIS CARD
IN ALL PHOTOGRAPHS**

(4)

Bend

M. J. - Pennington
River View Beach

SEP 24 1949

AMUSEMENT RIDES, A MODERN SWIMMING POOL, A LAKE AND AN ATHLETIC FIELD MAKE RIVER-VIEW BEACH PARK AN IDEAL RESORT FOR FAMILY OR GROUP EXCURSIONS.



This photograph is made only for research purposes or to share non-commercially. For all other purposes, contact Rights and Reproductions at rnr@hsp.org 215-732-6200 x333 web: <http://digitallibrary.hsp.org>



NO FLASH

Material may be protected by copyright law (Title 17 U.S. Code). Commercial usage rights are not granted for this image.

PLACE THIS CARD IN ALL PHOTOGRAPHS



RIVERVIEW OPERATING COMPANY

RIVERVIEW BEACH PARK, PENNSVILLE, N.J., PROVIDES A GOOD OUTING VIA WILSON LINE
STEAMER ON THE DELAWARE RIVER.



This photograph is made only for research purposes or to share non-commercially. For all other purposes, contact Rights and Reproductions at rnr@hsp.org 215-732-6200 x333 web: <http://digitallibrary.hsp.org>



NO FLASH

Material may be protected by copyright law (Title 17 U.S. Code). Commercial usage rights are not granted for this image.

PLACE THIS CARD IN ALL PHOTOGRAPHS

U 125

*H. J. Pennington
Kinnear Street*

SEP 24 1945

EVERVIEW OPERATING COMPANY

EVERVIEW BELLS PALE, PHILADELPHIA, N.J., PROVIDES A GOOD OUTING VIA WILSON LINE
STEAMER ON THE DELAWARE RIVER.



This photograph is made only for research purposes or to share non-commercially. For all other purposes, contact Rights and Reproductions at mr@hsp.org 215-732-6200 x 333 web: <http://digitallibrary.hsp.org>



Material may be protected by copyright law (Title 17 U.S. Code). Commercial usage rights are not granted for this image.

PLACE THIS CARD IN ALL PHOTOGRAPHS



This photograph is made only for research purposes or to share non-commercially. For all other purposes, contact Rights and Reproductions at rnr@hsp.org 215-732-6200 x333 web: <http://digitallibrary.hsp.org>



NO FLASH

Material may be protected by copyright law (Title 17 U.S. Code). Commercial usage rights are not granted for this image.

PLACE THIS CARD IN ALL PHOTOGRAPHS

Handwritten scribbles

*Resorts 7/26
3 col cut
Friday 11/17*

New swimming pool at Riverview Beach, Pennsville, N. J., is seen above with a crowd of
bathers having the time of their lives. The \$150,000 pool is 75 by 100 feet and is supplied with
water at the rate of 60,000 gallons an hour.

*N. J.
Riverview Beach*

PHILADELPHIA RECORD
JUL 26 1936
Reference Library



This photograph is made only for research purposes or to share non-commercially. For all other purposes, contact Rights and Reproductions at rnr@hsp.org 215-732-6200 x333 web: <http://digitallibrary.hsp.org>



Material may be protected by copyright law (Title 17 U.S. Code). Commercial usage rights are not granted for this image.

PLACE THIS CARD IN ALL PHOTOGRAPHS



This photograph is made only for research purposes or to share non-commercially. For all other purposes, contact Rights and Reproductions at rnr@hsp.org 215-732-6200 x333 web: <http://digitalibrary.hsp.org>



NO FLASH

Material may be protected by copyright law (Title 17 U.S. Code). Commercial usage rights are not granted for this image.

PLACE THIS CARD IN ALL PHOTOGRAPHS

from Wilson Line: exclusive to Record

Florence Progdzinski, 772
South Front St. (center) ~~was~~
winner of the 1st annual
Polish-American outing beauty
contest put on by St. Stanislaus
C.C. Phila. Sunday afternoon at
Reverview Beach N.J.

Some 2000 members + friends
of the St. Stanislaus parish took
the trip down the Delaware via
the Wilson Line "S. S. State of
Penna.

girl on the left: is Marie Lypick,
428 So. 40th St. (on right)

Helen Andzeczyk, 119 League St.
MAY 27 1940



Historical Society
of Pennsylvania

This photograph is made only for
research purposes or to share non-commercially.

For all other purposes,
contact Rights and Reproductions at
rnr@hsp.org
215-732-6200 x333
web: <http://digitallibrary.hsp.org>



NO FLASH

Material may be protected by copyright law
(Title 17 U.S. Code).
Commercial usage rights are not granted for
this image.

**PLACE THIS CARD
IN ALL PHOTOGRAPHS**



Historical Society
of Pennsylvania

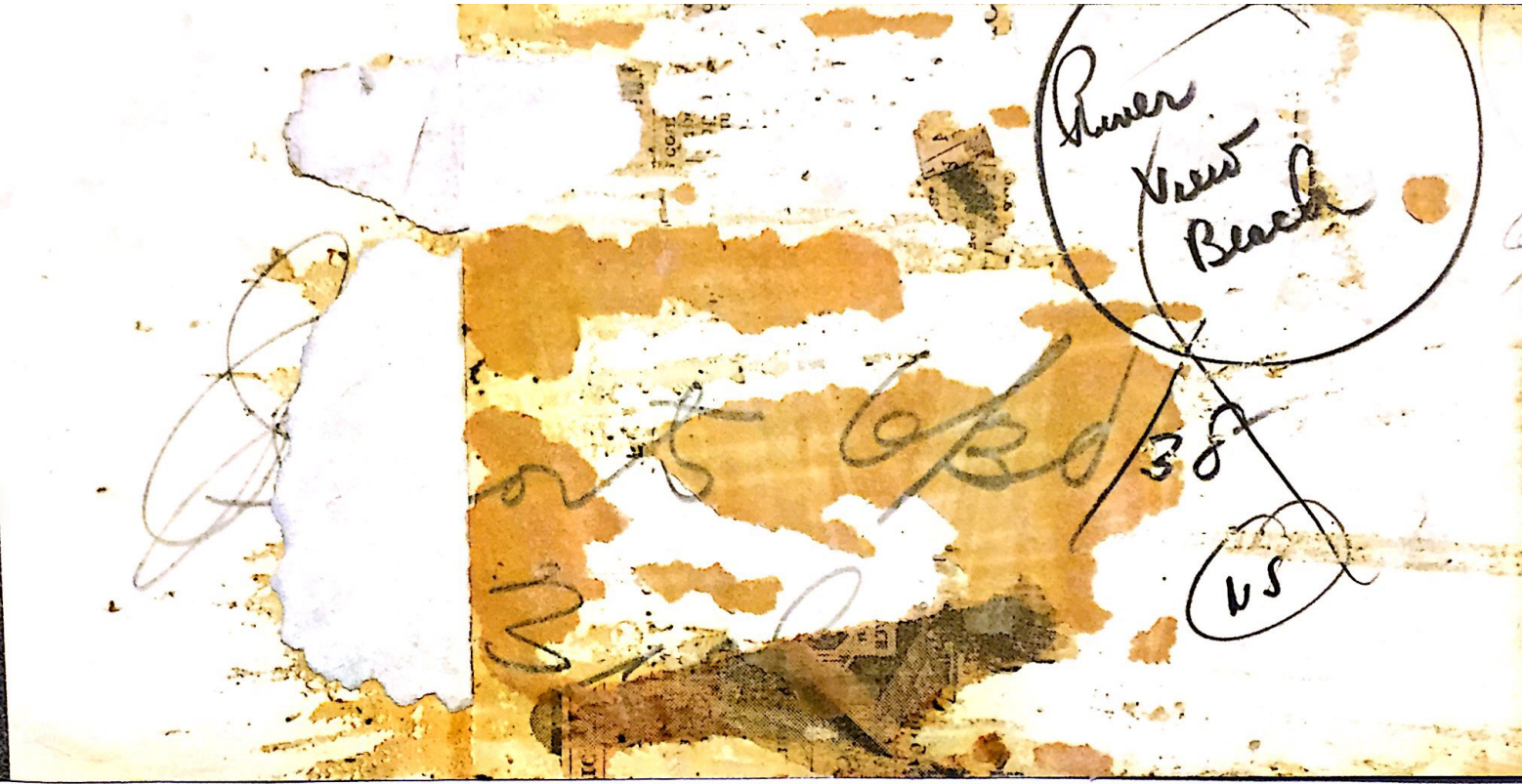
This photograph is made only for
research purposes or to share non-commercially.
For all other purposes,
contact Rights and Reproductions at
rnr@hsp.org
215-732-6200 x333
web: <http://digitallibrary.hsp.org>



NO FLASH

Material may be protected by copyright law
(Title 17 U.S. Code).
Commercial usage rights are not granted for
this image.

**PLACE THIS CARD
IN ALL PHOTOGRAPHS**



This photograph is made only for research purposes or to share non-commercially. For all other purposes, contact Rights and Reproductions at rnr@hsp.org 215-732-6200 x333 web: <http://digitallibrary.hsp.org>



NO FLASH

Material may be protected by copyright law (Title 17 U.S. Code). Commercial usage rights are not granted for this image.

**PLACE THIS CARD
IN ALL PHOTOGRAPHS**